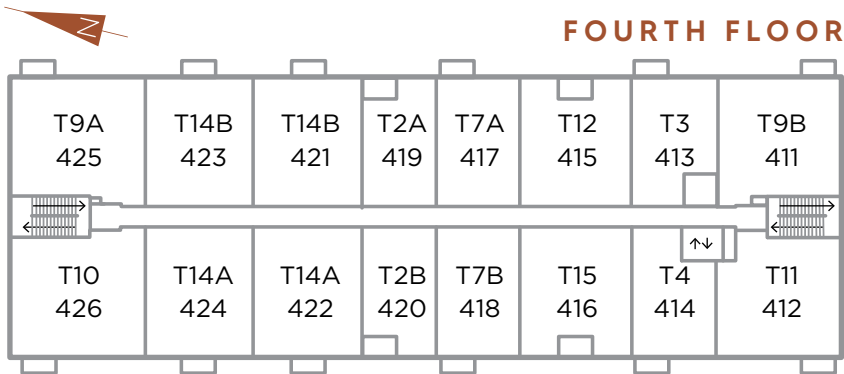
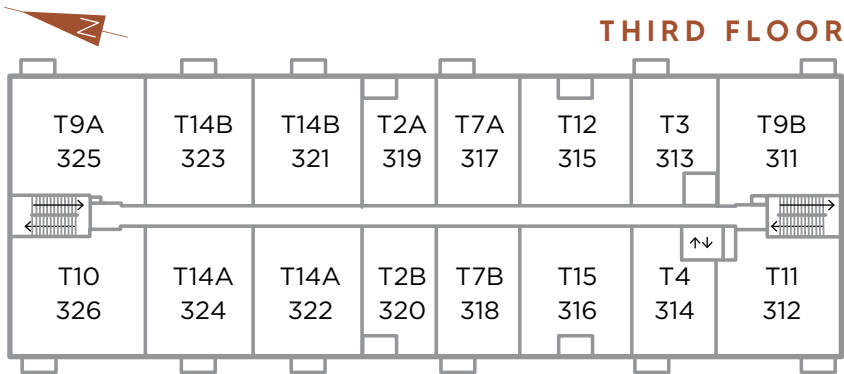
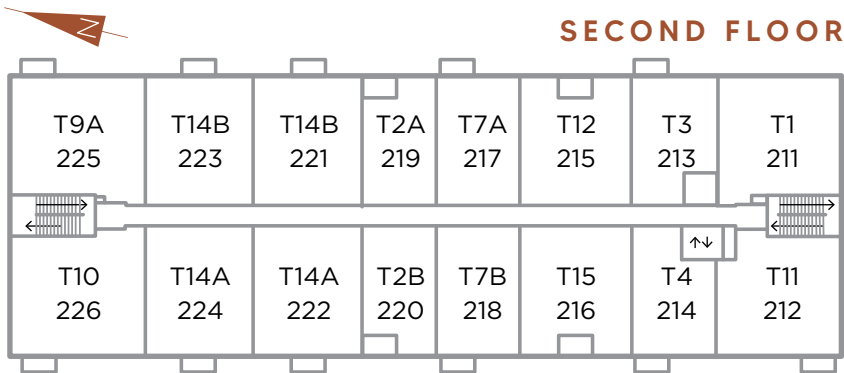
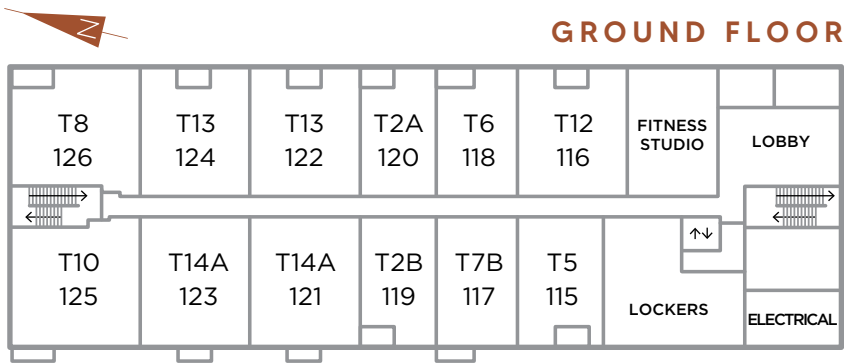


KEY PLANS FOR 2045 PORTOBELLO BOULEVARD

BUILDING A



rent@trioliving.ca | trioliving.ca

Materials, specifications and floor plans are subject to change without notice. All renderings are artist's concept. All floor plans have approximate dimensions. Actual usable floor space may vary from stated floor plan. Windows, doors and balcony size and location may vary. Balcony/Terrace, as applicable. All dimensions are subject to normal construction variances. Some features may vary by suite design. Furniture not included. E. & O.E.